




<b>MODEL</b>	CANADIAN VICKERS
<b>FLAG</b>	
<b>LENGTH</b>	99 m
<b>BEAM</b>	11.1 m
<b>DRAFT</b>	4.1 m
<b>BUILT</b>	1943
<b>REFIT</b>	2001
<b>GUESTS</b>	34
<b>CABINS</b>	17
<b>CRUISE SPEED</b>	15 knots
<b>MAX SPEED</b>	19 knots
<b>PRICE</b>	

€ 52,000,000

FOR SALE

# CHRISTINA O

99.13M (325'00") | CANADIAN VICKERS | 1943 | 2001

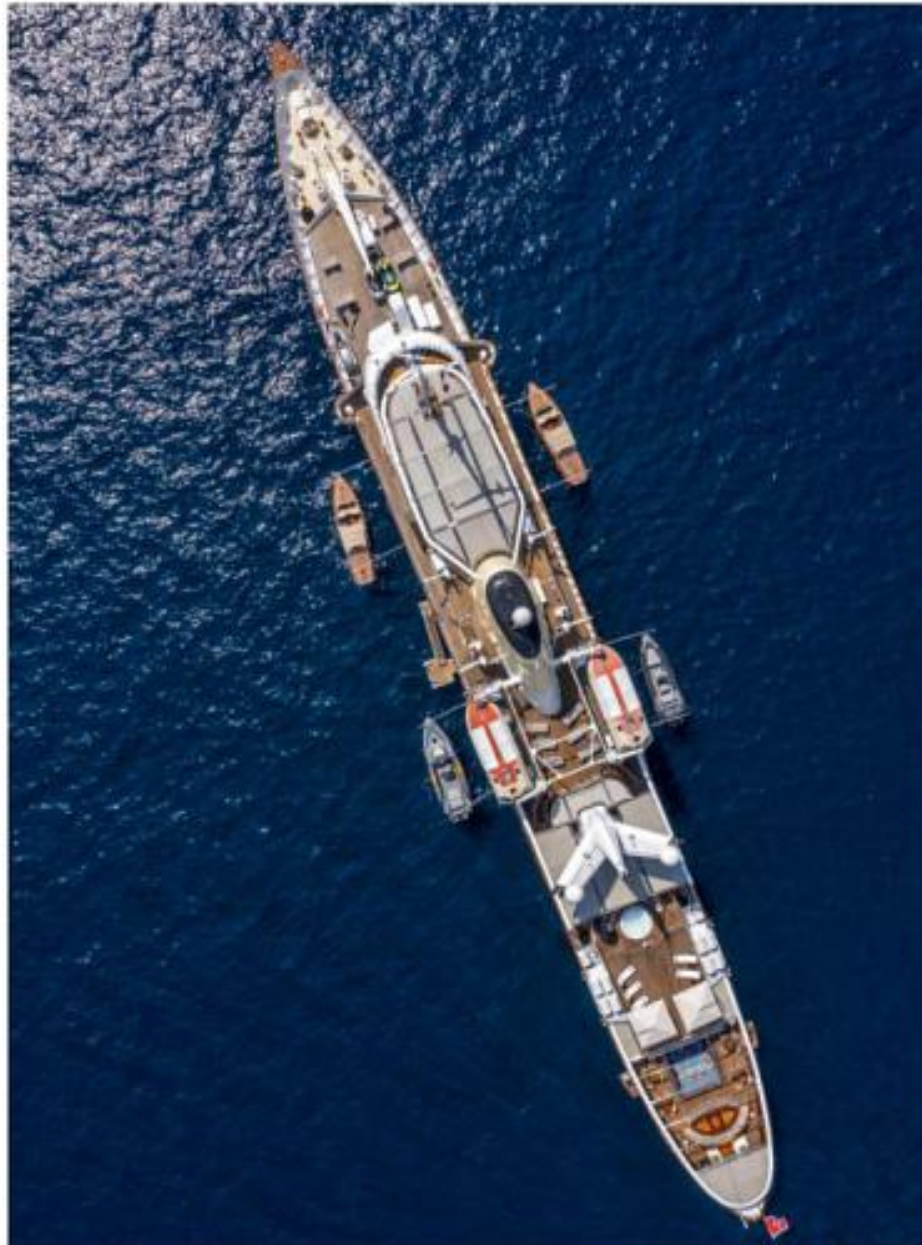


AFT DINING AREA



MAIN DECK




**OVERVIEW**

<b>BUILDER</b>	CANADIAN VICKERS
<b>BUILT / REFIT</b>	1943 / 1956 / 2001
<b>BEAM</b>	11.12M / 36'06"
<b>DRAFT</b>	4.11M / 13'06"
<b>STATEROOMS</b>	17
<b>GUESTS</b>	34/36
<b>CREW</b>	40
<b>HULL MATERIAL</b>	STEEL
<b>SPEED</b>	15 KNOTS / 19 MAX
<b>FLAG</b>	MALTA

**EXPERT'S VIEW**

*CHRISTINA O is a truly unique offering that combines one of the most famous yachting pedigrees in the world with the technical integrity of a modern rebuild. Extensively rebuilt between 1999 and 2001, she meets full Passenger Vessel standards, positioning her as both a piece of maritime history and a proven commercial platform with enduring global appeal.*

*Delivering an onboard experience that is simply unmatched, she blends grand volumes with iconic design features from the Aristotle Onassis era. At nearly 100 meters and over 1,800 GT, she accommodates 34/36 guests while cruising and 157 for specific events, offering a proposition that is difficult to replicate and making her one of the most recognizable yacht on the market.*


**FLACKTON YACHTING**  
 Superyacht solutions

Yachts offered are subject to availability. The particulars are believed to be correct but are not guaranteed and may not be used for contractual purposes. Specification provided for information only.



MAIN DECK LOUNGE



MAIN DECK



**FLACKTON YACHTING**  
superior service



 **FLACKTON YACHTING**  
Yacht Solutions



MAIN DECK





MAIN DECK



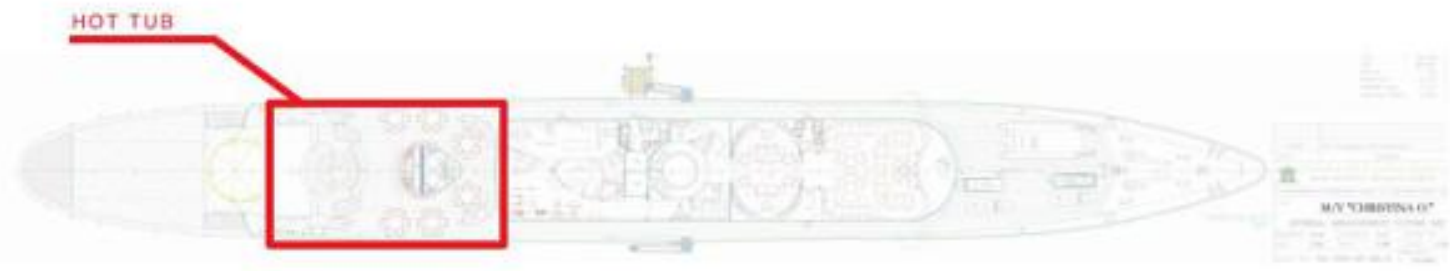
**FLACKTON YACHTING**  
Superyacht solutions



MAIN DECK



**FLACKTON YACHTING**



PROMENADE DECK





SPA AND FITNESS CENTER

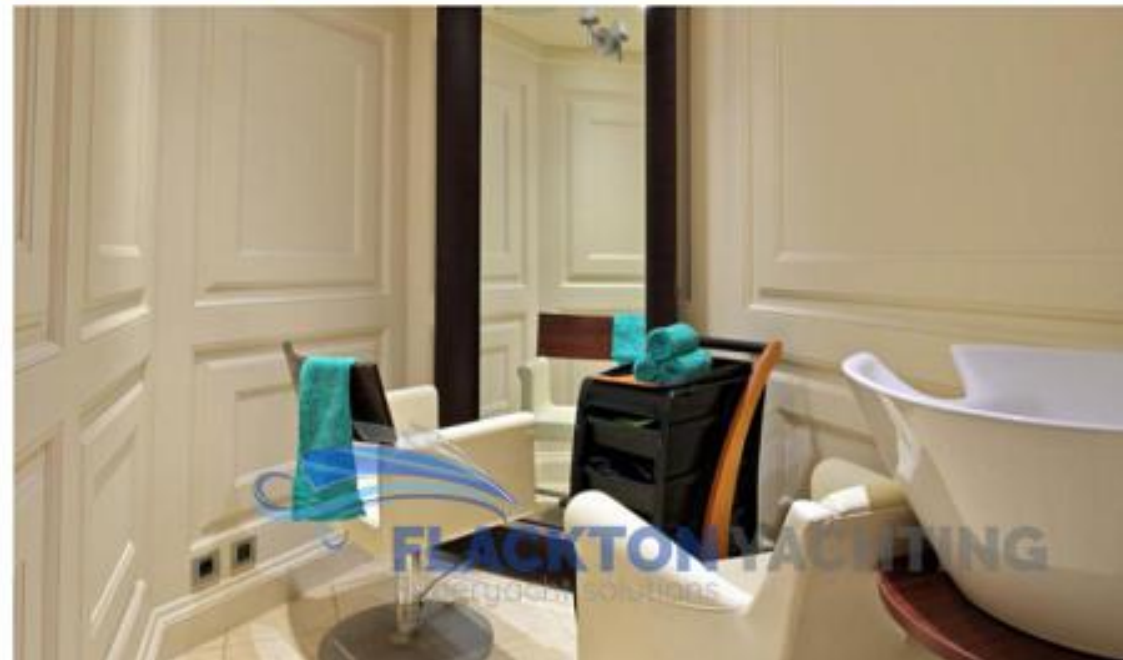


MY 'CHRISTINA O'

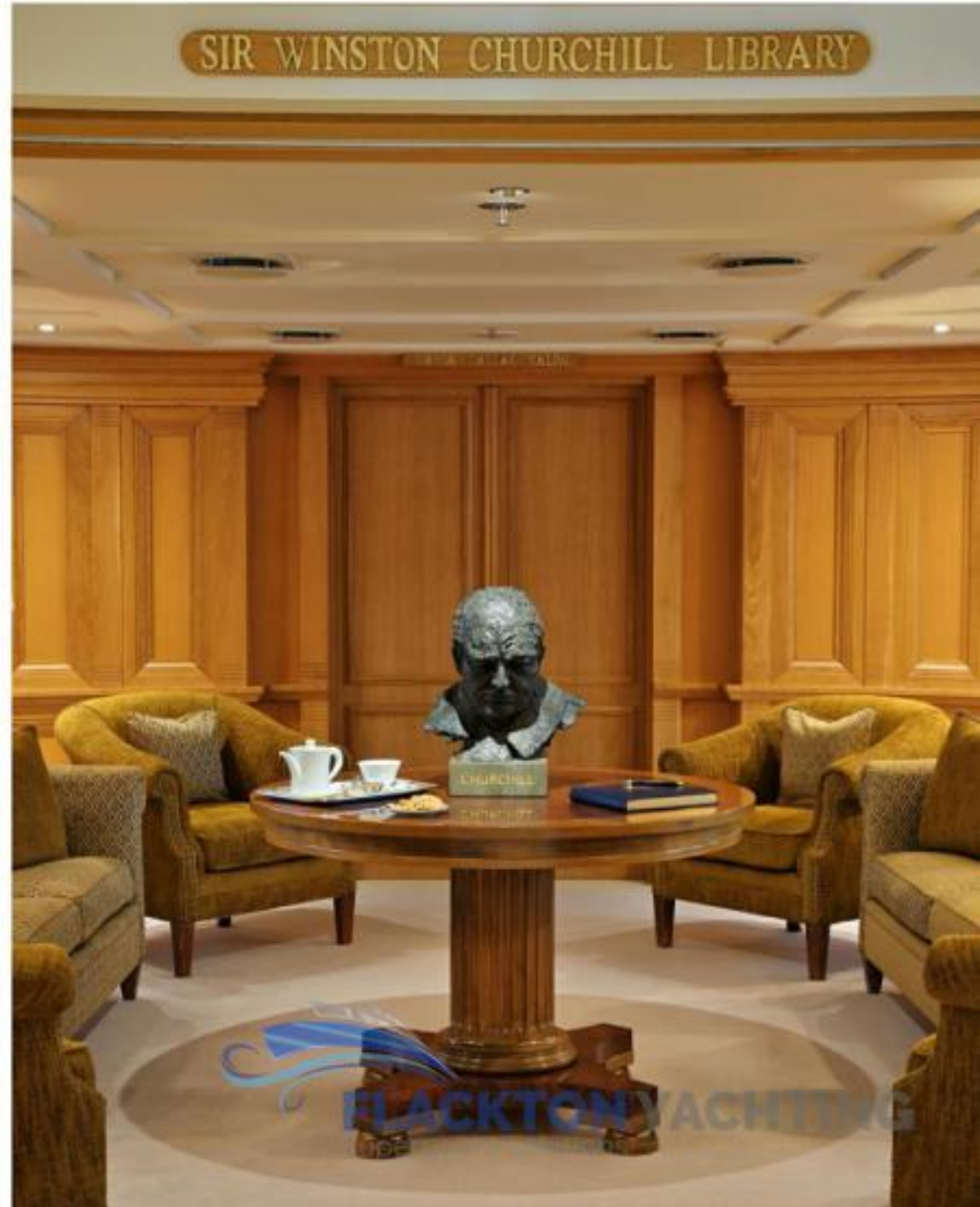
Overall Length	38.00
Overall Width	10.00
Beam	10.00
Waterline Length	35.00
Waterline Width	9.00
Waterline Beam	9.00
Waterline Depth	1.50
Waterline Area	135.00
Waterline Volume	202.50
Waterline Weight	202.50
Waterline Capacity	202.50
Waterline Fuel Capacity	202.50
Waterline Fuel Consumption	202.50
Waterline Fuel Efficiency	202.50
Waterline Fuel Range	202.50
Waterline Fuel Burn Rate	202.50
Waterline Fuel Burn Rate per Hour	202.50
Waterline Fuel Burn Rate per Mile	202.50
Waterline Fuel Burn Rate per Gallon	202.50
Waterline Fuel Burn Rate per Liter	202.50
Waterline Fuel Burn Rate per Kilowatt Hour	202.50
Waterline Fuel Burn Rate per Kilowatt Hour per Liter	202.50
Waterline Fuel Burn Rate per Kilowatt Hour per Gallon	202.50
Waterline Fuel Burn Rate per Kilowatt Hour per Liter per Hour	202.50
Waterline Fuel Burn Rate per Kilowatt Hour per Gallon per Hour	202.50
Waterline Fuel Burn Rate per Kilowatt Hour per Liter per Mile	202.50
Waterline Fuel Burn Rate per Kilowatt Hour per Gallon per Mile	202.50
Waterline Fuel Burn Rate per Kilowatt Hour per Liter per Hour per Mile	202.50
Waterline Fuel Burn Rate per Kilowatt Hour per Gallon per Hour per Mile	202.50
Waterline Fuel Burn Rate per Kilowatt Hour per Liter per Hour per Mile per Hour	202.50
Waterline Fuel Burn Rate per Kilowatt Hour per Gallon per Hour per Mile per Hour	202.50
Waterline Fuel Burn Rate per Kilowatt Hour per Liter per Hour per Mile per Hour per Hour	202.50
Waterline Fuel Burn Rate per Kilowatt Hour per Gallon per Hour per Mile per Hour per Hour	202.50
Waterline Fuel Burn Rate per Kilowatt Hour per Liter per Hour per Mile per Hour per Hour per Hour	202.50
Waterline Fuel Burn Rate per Kilowatt Hour per Gallon per Hour per Mile per Hour per Hour per Hour	202.50

PROMENADE DECK







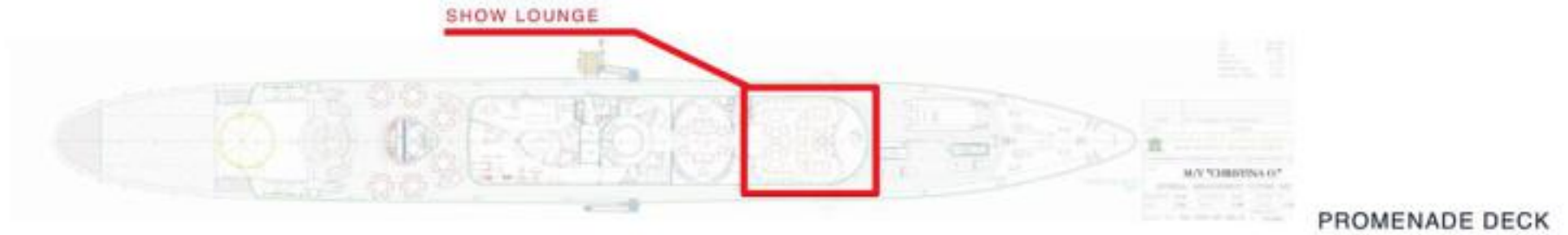


SIR WINSTON CHURCHILL LIBRARY



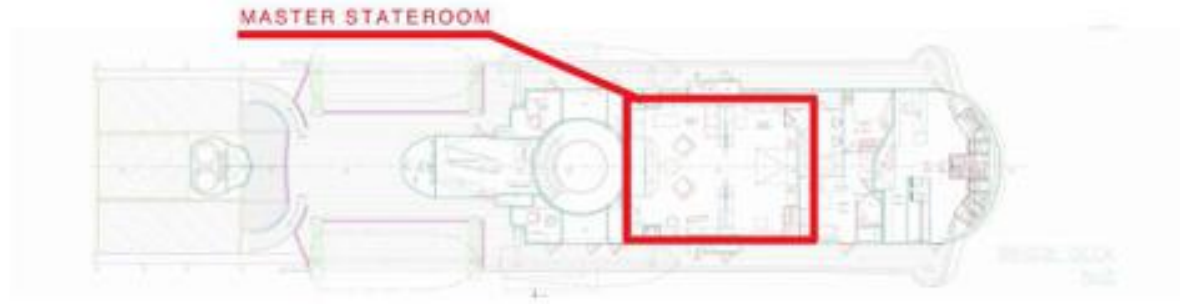
PROMENADE DECK











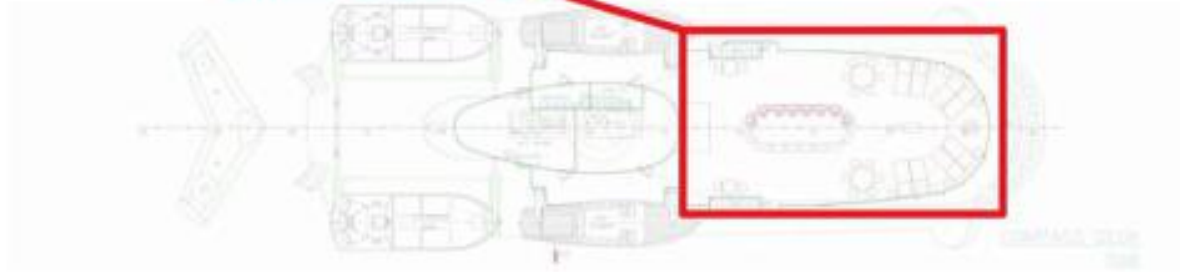
BRIDGE DECK



 **FLACKTON YACHTING**



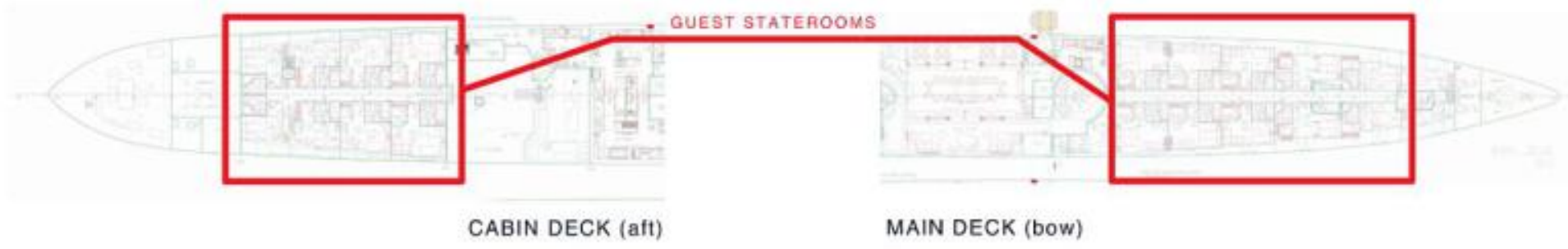
**EXTERIOR BOW DINING**



**COMPASS DECK**









**FLACKTON YACHTING**  
Superyacht solutions



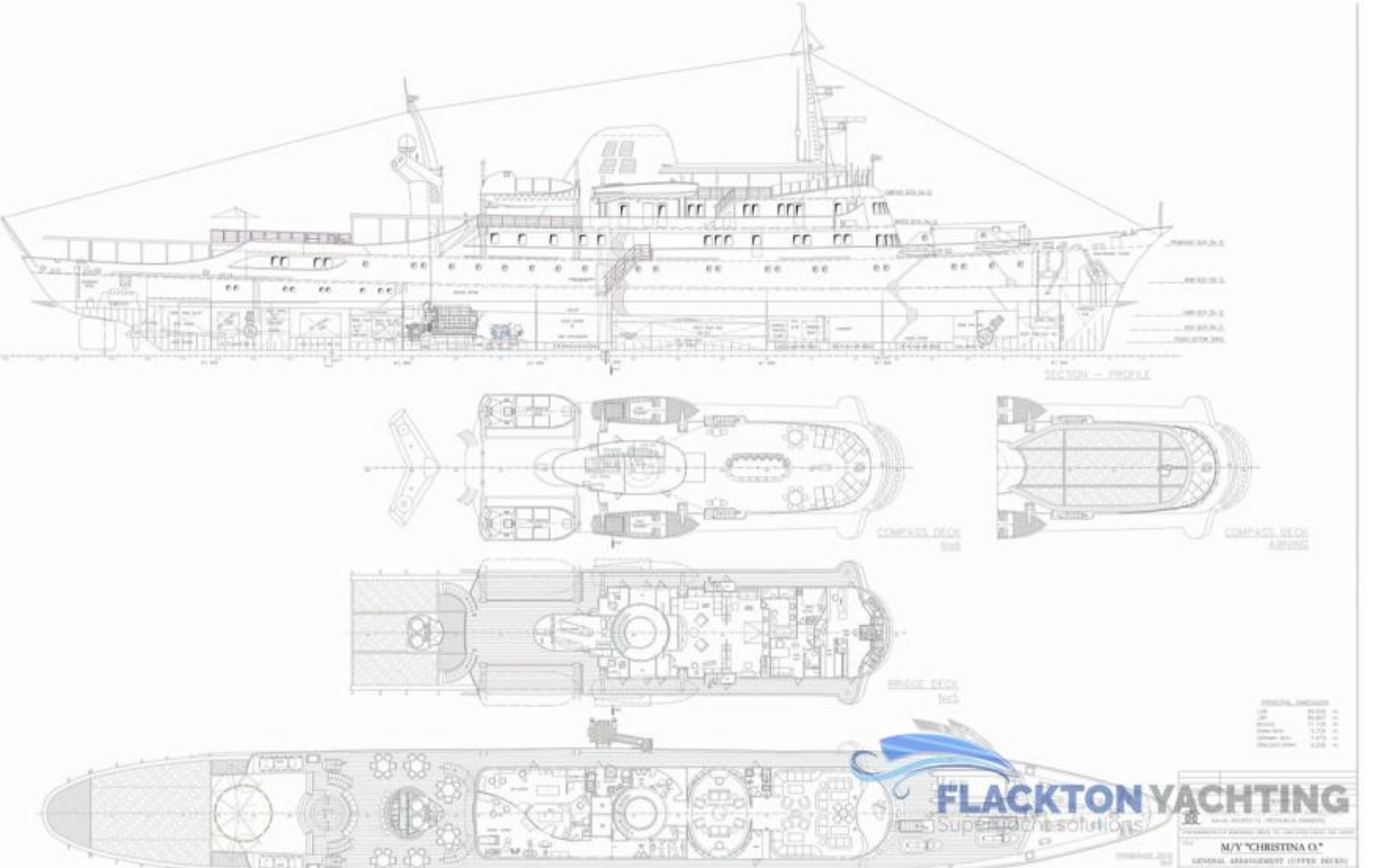








 **FLACKTON YACHTING**  
Superyacht solutions



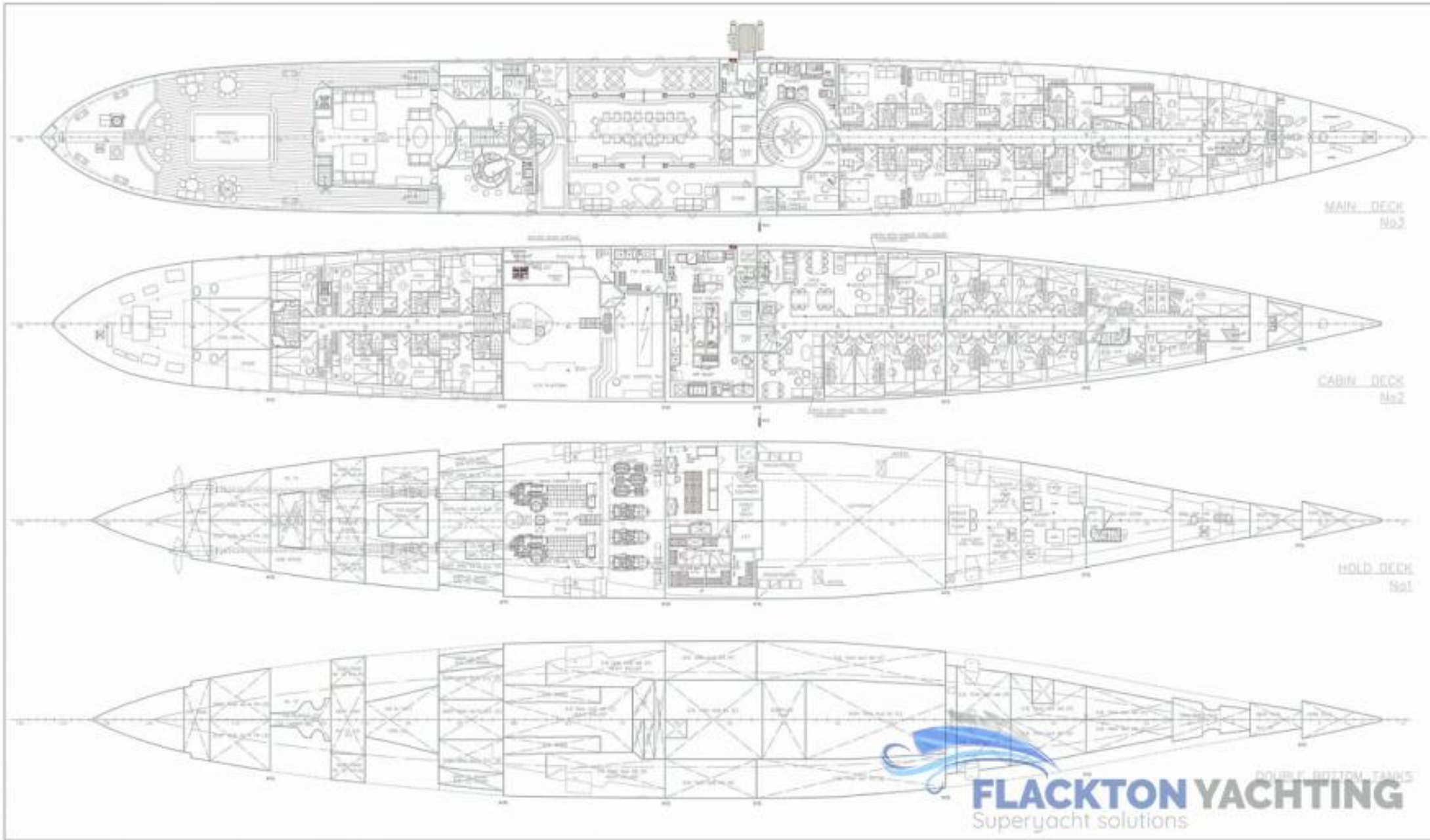
DIMENSION LINES	
Length	48.00
Beam	11.00
Waterline	11.00
Max. Draft	2.50
Max. Depth	2.50



**FLACKTON YACHTING**  
Super yacht solutions

1000 BAY STREET, METCALLE HEIGHTS  
VICTORIA, BRITISH COLUMBIA V8N 2C1  
CANADA  
TEL: 250.688.8888  
WWW.FLACKTONYACHTING.COM

M/Y "CHRISTINA O"  
GENERAL ARRANGEMENT (UPPER DECK)



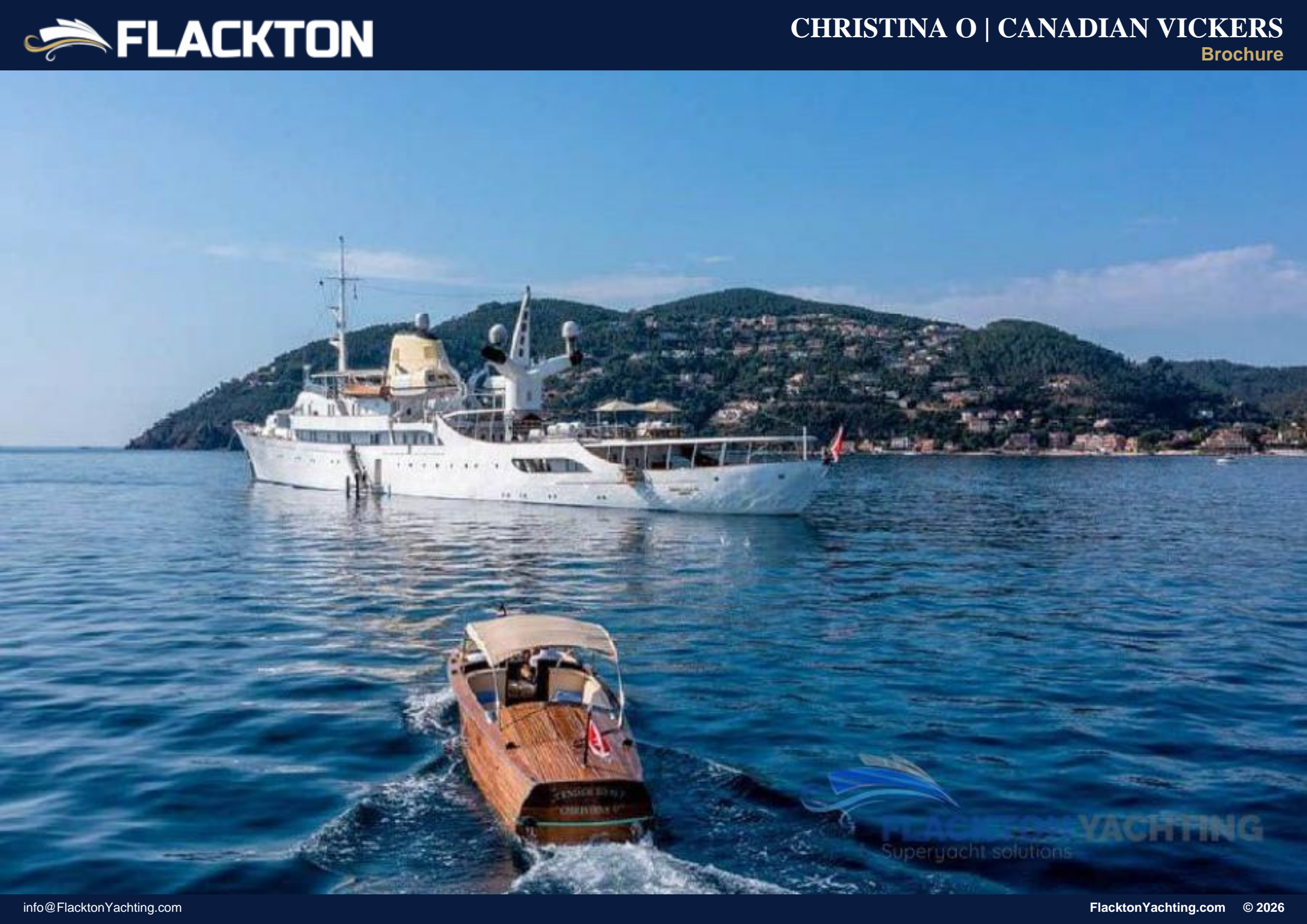








 **FLACKTON YACHTING**



**FLACKTON YACHTING**  
Superyacht solutions















 **FLACKTON YACHTING**



**FLACKTON YACHTING**  
Superyacht solutions













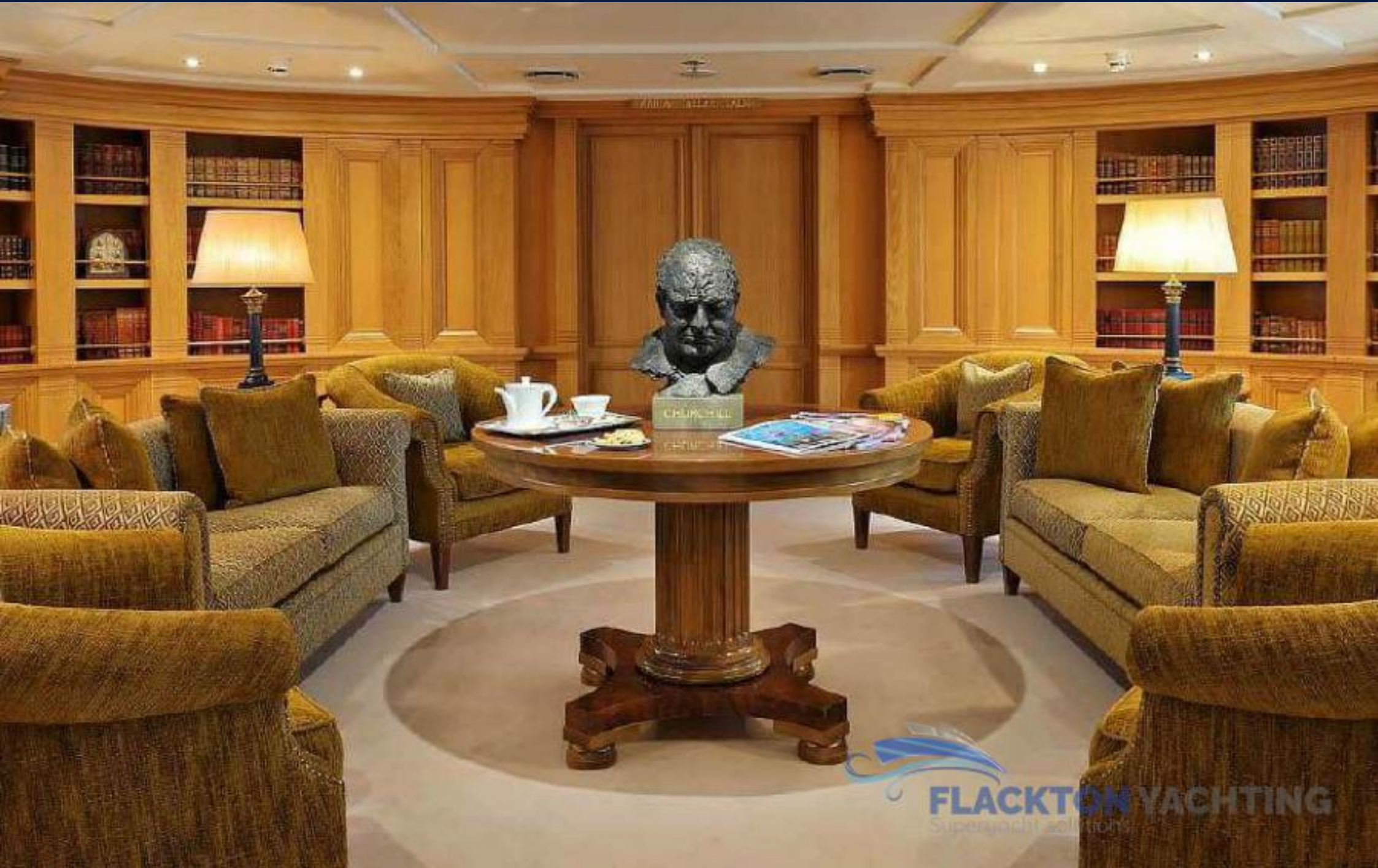




**FLACKTON YACHTING**  
Superyacht Solutions











**FLACKTON YACHTING**  
Superyacht solutions







 **FLACKTON YACHTING**  
super yacht solutions



 **FLACKTON YACHTING**  
Superyacht Interiors



**FLACKTON YACHTING**  
Superyacht solutions



**FLACKTON YACHTING**  
Solutions



**FLACKTON**  
YACHTING





 **FLACKTON YACHTING**  
Superyacht solutions



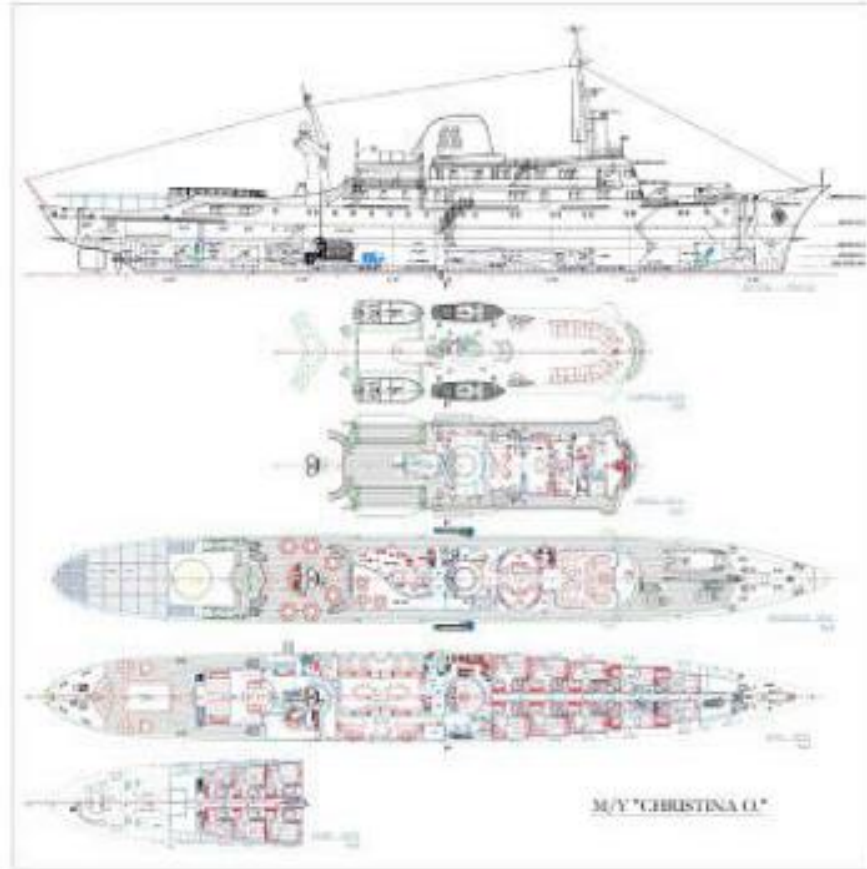
 **FLACKTON YACHTING**

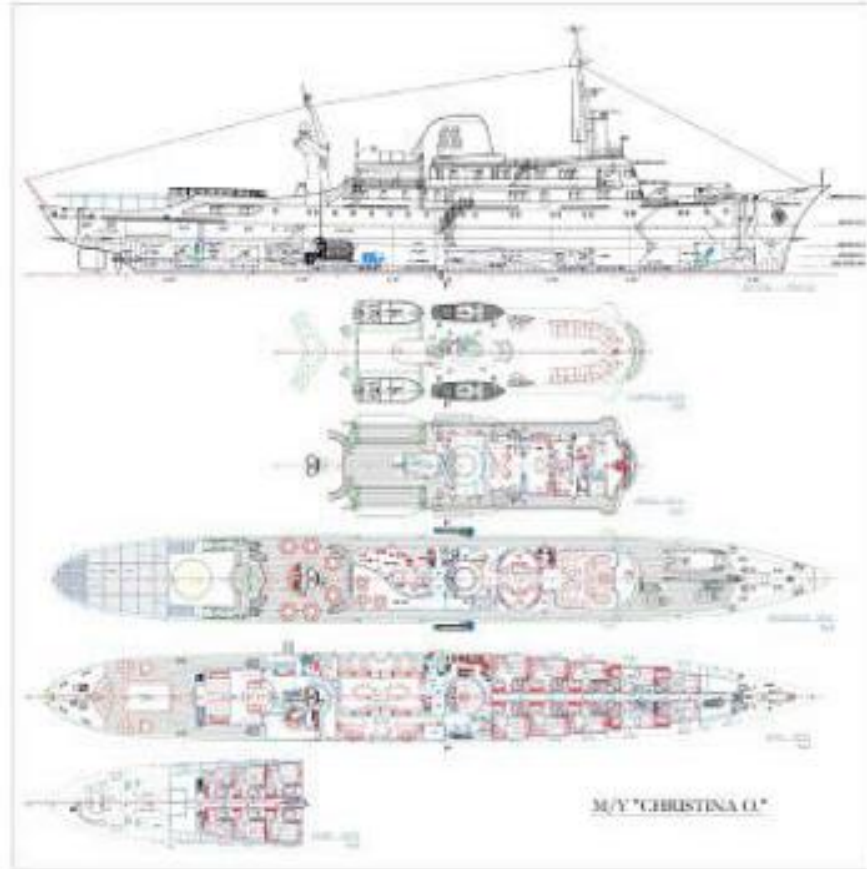


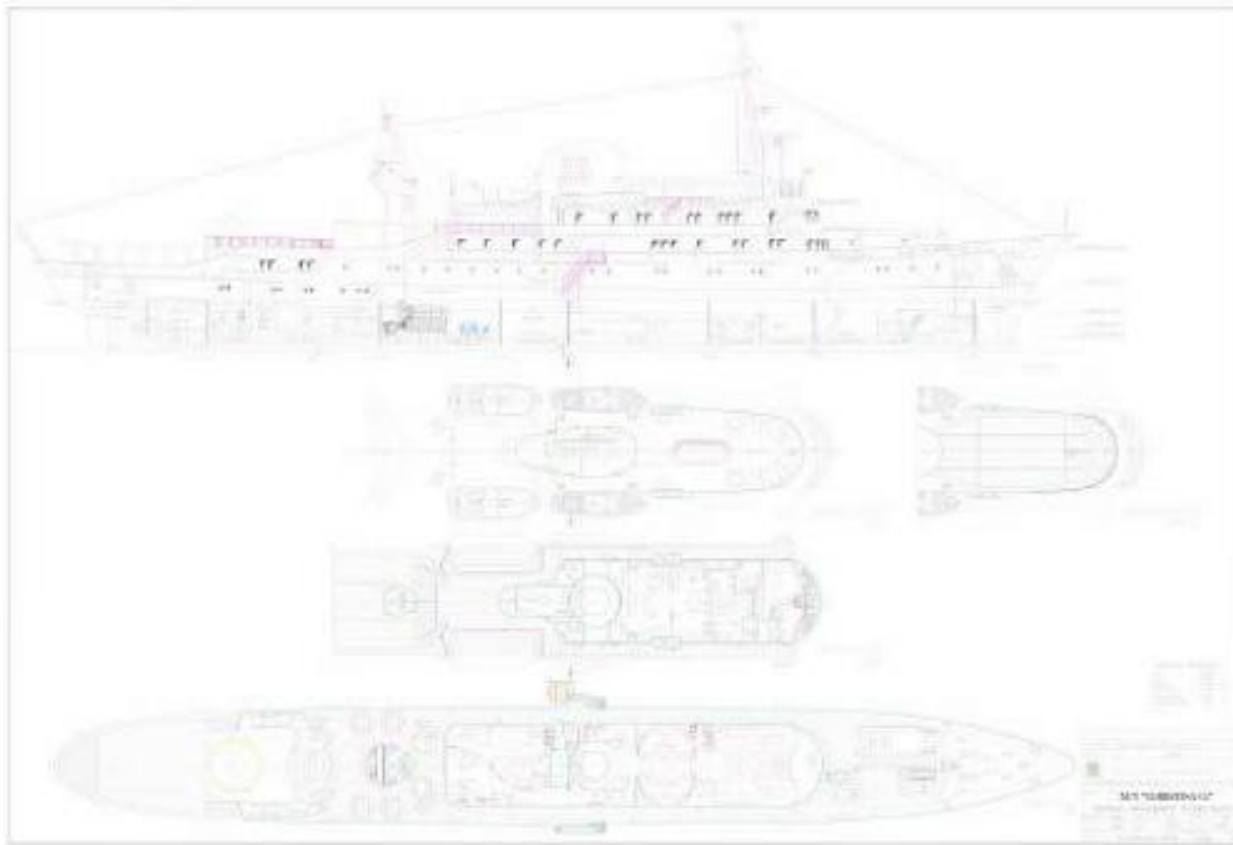


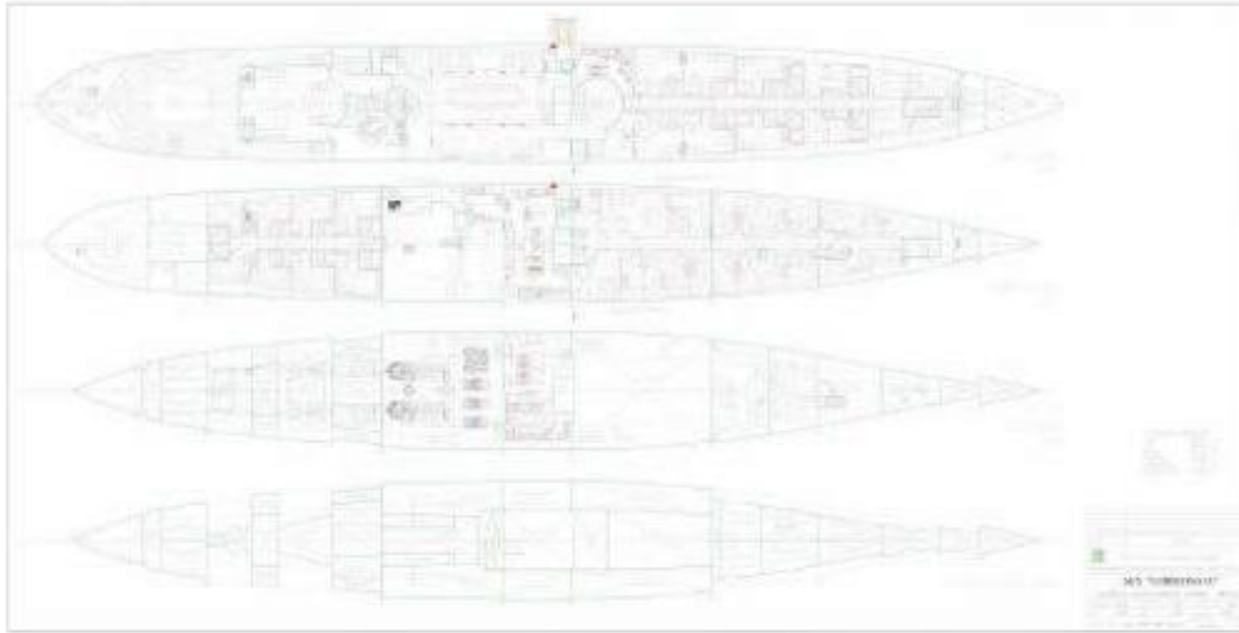
 **FLACKTON YACHTING**

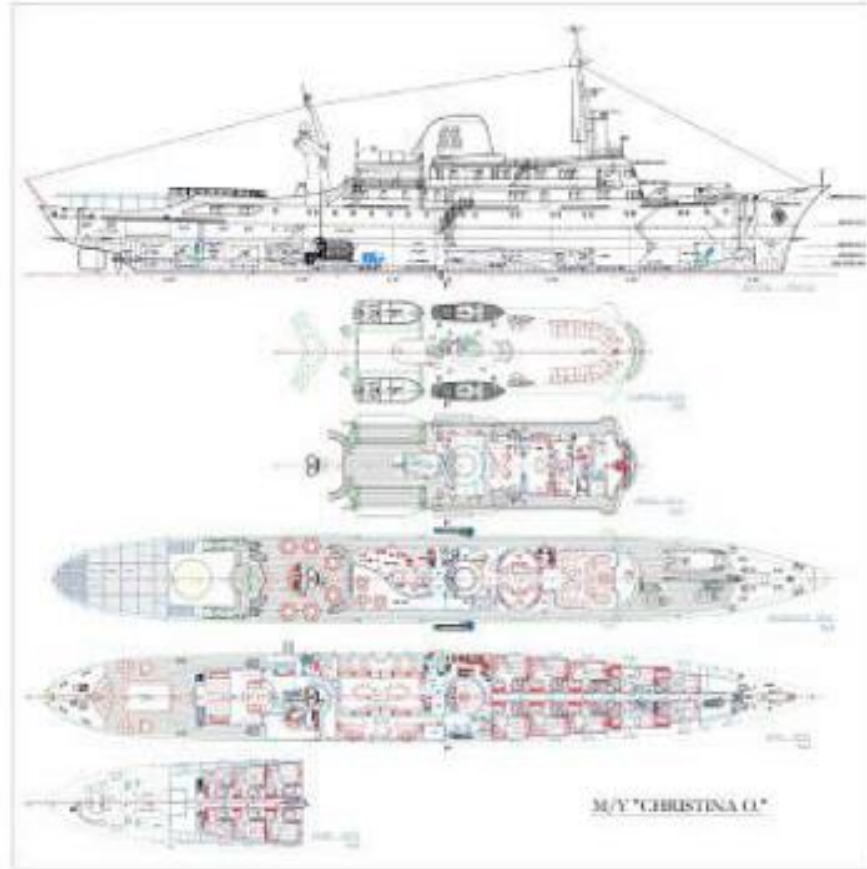
 **FLACKTON YACHTING**











**TECHNICAL SPECIFICATIONS**

<b>OWNER</b>	<b>FUEL TYPE</b>	<b>GROSS TONNAGE</b>	<b>CRUISING/MAX SPEED</b>	<b>ACCOMMODATION</b>
Canadian Vickers	Diesel	1802 GT	15 knots / 18 knots	34 guests in 17 cabins
<b>ARCHITECTURAL DESIGN</b>	<b>EXTERIOR DESIGN</b>	<b>LENGTH</b>	<b>BEAM</b>	<b>HULL MATERIAL</b>
Stavros Niarchos Foundation	Caesar Pinnau	325' 3" (99.13m)	36' 6" (11.12m)	Steel
<b>REGISTRATION</b>	<b>FLAG</b>	<b>BUILT/REFIT</b>	<b>DRAFT (F/M)</b>	<b>ENGINES</b>
	Maltese	1943 / 2025	13' 6" (4.11m)	2 x MAN-B&W 6L-27/38
<b>MARKETING SPECIFICATIONS</b>	<b>LOCATION</b>	<b>ASKING PRICE</b>	<b>VAT STATUS</b>	
	Greece / Athens	€52,000,000	Not Paid	

## Table of Contents

### 1. ACCOMMODATION

### 2. SPECIFICATIONS

### 3. INFORMATION

## CHRISTINA O | CANADIAN VICKERS

Christina O was originally delivered by Canadian Vickers in 1943 as an anti-submarine vessel and served in the D-Day landings in Normandy, France. Naval architecture is by Professor C sar Pinnau and Howaldtswerke, while exterior design is by Costas Carabelas.

The superyacht was later converted by Greek shipowner Aristotle Onassis, the second husband of Jackie Kennedy, who bought her at scrap value and then spent \$4,000,000 on the rebuild; approximately \$50,000,000 in today's terms. As part of her works, she was fitted with a new interior by Apostolos Molindris.

Elizabeth Taylor, Grace Kelly, Frank Sinatra, Maria Callas, Richard Burton, John Wayne, Winston Churchill and John F. Kennedy are some of the names that have walked on her decks.

Christina O later underwent a complete rebuild in 2001, where she was stripped down to the bare hull while carefully preserving her original features.

## Disclaimer

Yachts offered are subject to availability. The information provided is believed to be correct but not guaranteed and may not be used for contractual purposes. Specifications provided for information only.

## 1. ACCOMMODATION

Christina O accommodates a large party of 34 guests in 17 cabins, refurbished in similar décor to that originally selected by Jackie Onassis. Her rich interior still contains the Steinway piano that Frank Sinatra and Maria Callas used while visiting, while the Onassis suite boasts an onyx fireplace and Baccarat crystal lighting. The yacht's glamorous circular staircase also has a vintage onyx and silver handrail.

There are quarters for up to 39 crew.

## 2. SPECIFICATIONS

### **LOCATION - GREECE:**

#### **Construction:**

Aluminum Alloy - Superstructure 5083 H11 marine alloy

Builder - CANADIAN VICKERS

Classification - ABS

G.R.T - 1802

Steel - (New hull 2001, 10mm sides/12mm bottom)

#### **Capacity:**

Water Capacity - 81000 ltrs

#### **Machinery:**

Engine Hours - Port: 18313 - Starboard: 18202

Engine Model - 2 X MAN-B&W

Generator Hours - 1:32,768, 2:33,754, 3:28992

Generators - 3 X MAN-DEMP type D2840LE301

#### **Auxiliary Machinery:**

Water maker - 2 X 15m<sup>3</sup>/day 30000 ltrs/day

## 2. INFORMATION

CHRISTINA O is a truly unique offering that combines one of the most famous yachting pedigrees in the world with the technical integrity of a modern rebuild. Extensively rebuilt between 1999 and 2001, she meets full Passenger Vessel standards, positioning her as both a piece of maritime history and a proven commercial platform with enduring global appeal.

Delivering an onboard experience that is simply unmatched, she blends grand volumes with iconic design features from the Aristotle Onassis era. At nearly 100 meters and over 1,800 GT, she accommodates 34/36 guests while cruising and 157 for specific events, offering a proposition that is difficult to replicate and making her one of the most recognizable yacht on the market.

A total of 5,500hp is provided by twin MAN diesels, giving Christina O a cruising speed of 15 knots and a top speed of 19 knots, and the 1,802GT