



BUILDER Admiral
MODEL 39M

FLAG



LENGTH 39.3 m

BEAM 8 m

DRAFT 1.8 m

GUESTS 11

CABINS 5

CRUISE SPEED 26 knots

MAX SPEED 30 knots

PRICE

€ 7,500,000





FLACKTON YACHTING
Superyacht solutions

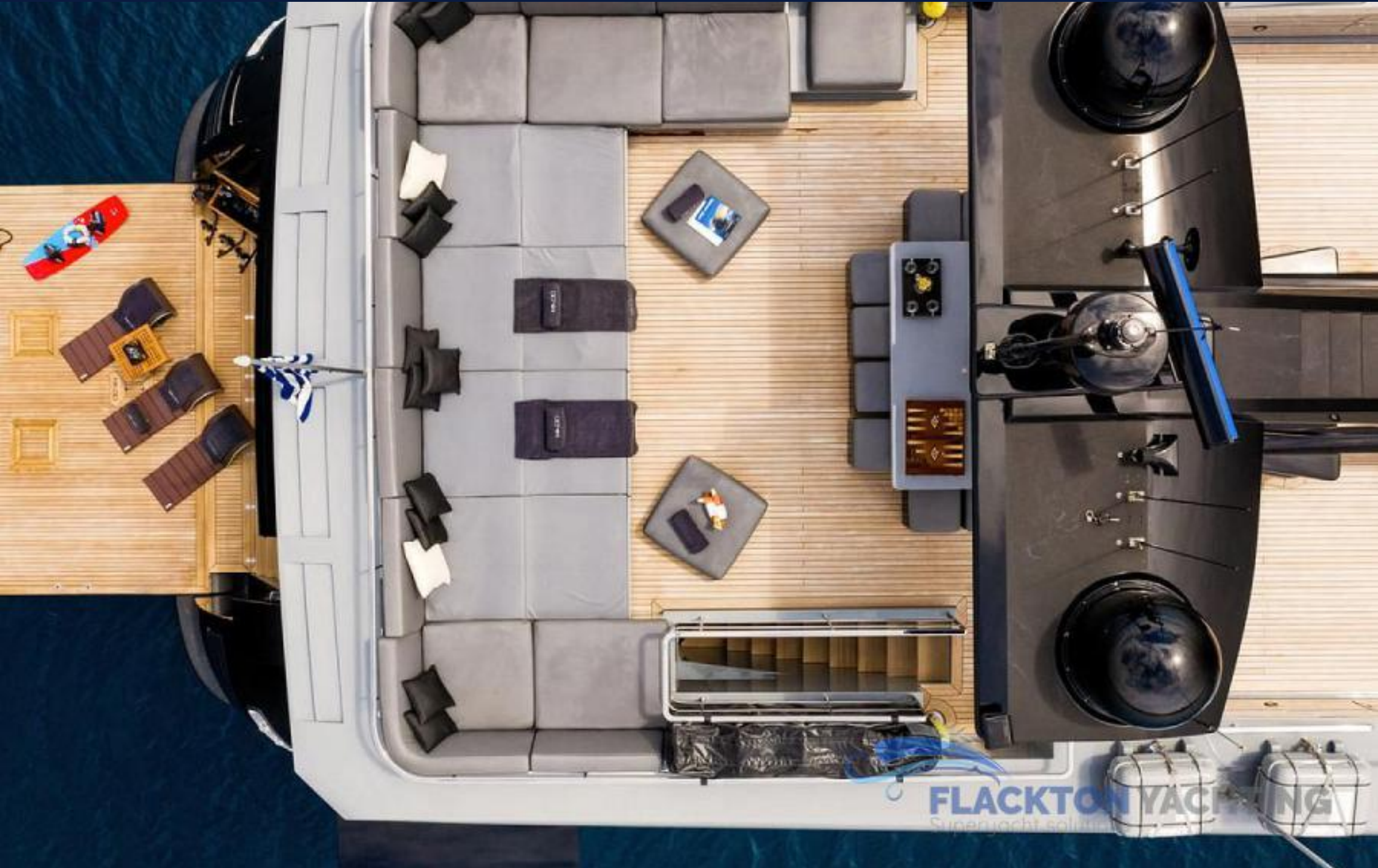




FLACKTON YACHTING
Superyacht Solutions



 **FLACKTON YACHTING**
Superyacht solutions





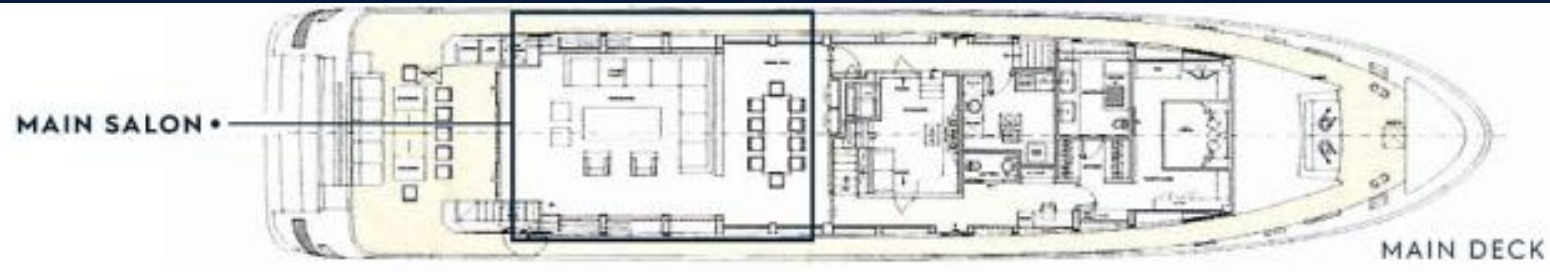


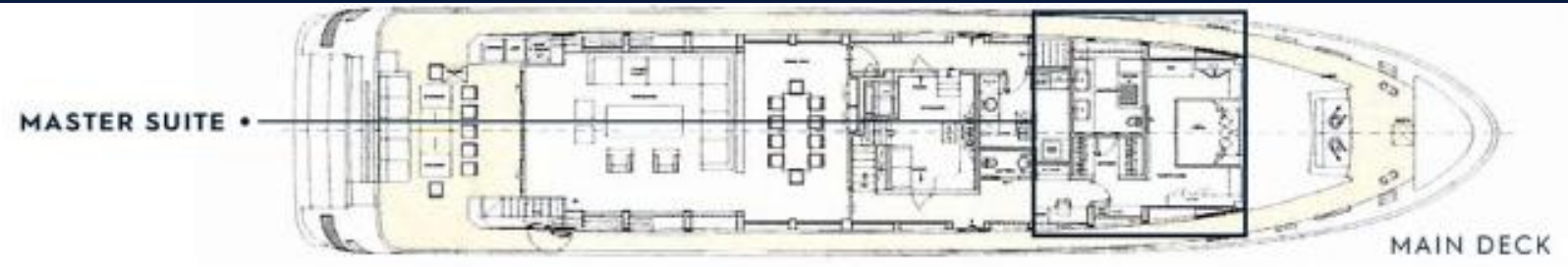




 **FLACKTON YACHTING**
Superyacht solutions



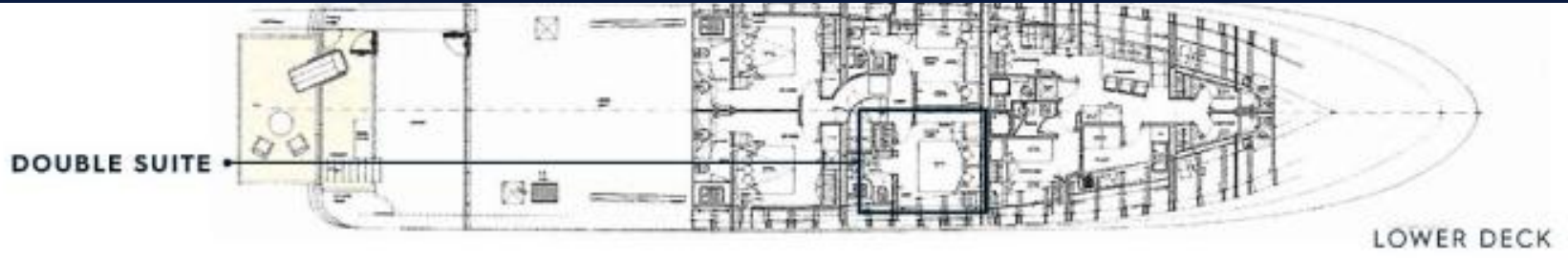




 **FLACKTON YACHTING**
Superyacht solutions



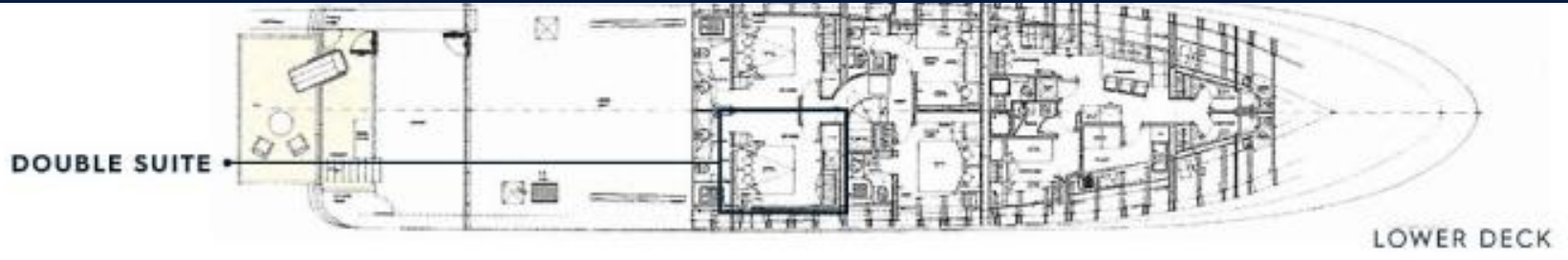
 **FLACKTON YACHTING**
Superyacht solutions



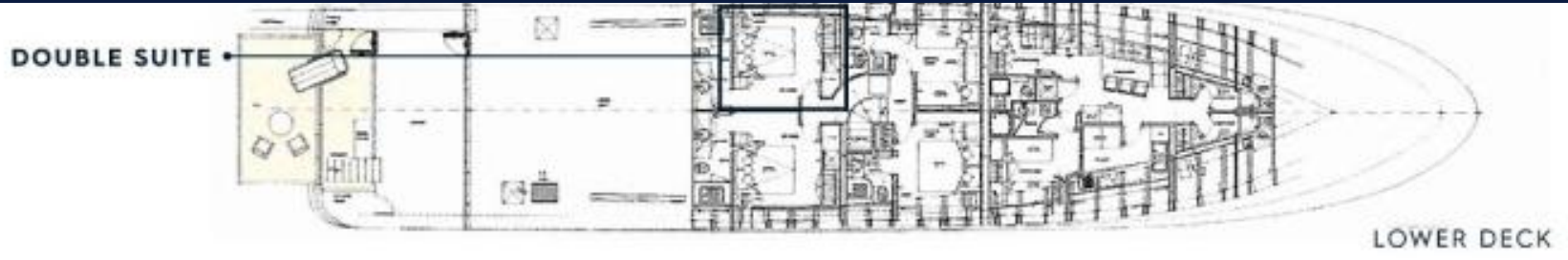


MAOO







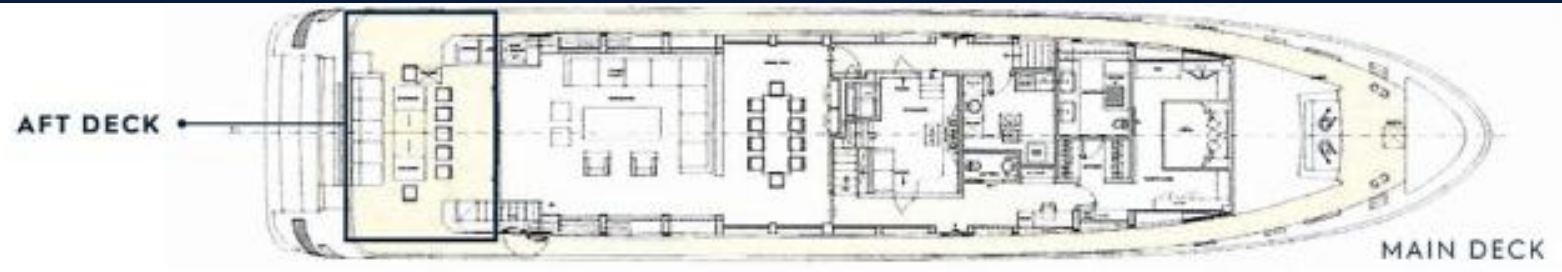




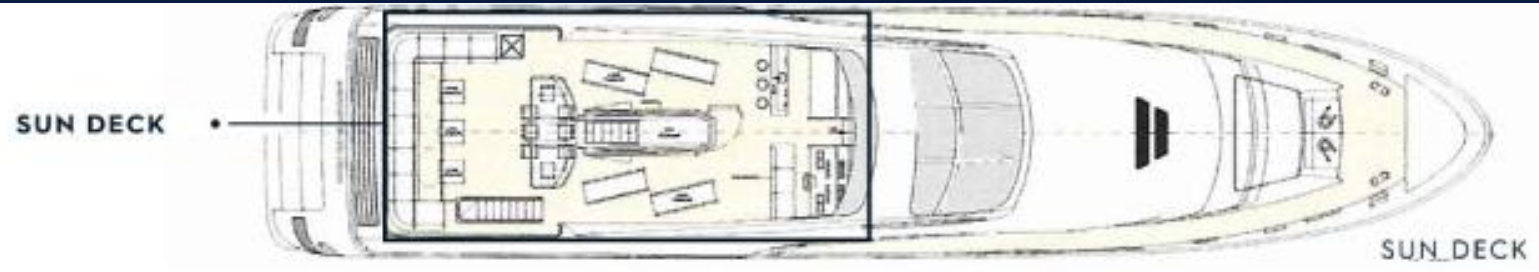
FLACKTON YACHTING
Superyacht solutions













 **FLACKTON YACHTING**
Superyacht



FLACKTON YACHTING
Superyacht solutions









FLACKTON YACHTING
Superyacht solutions







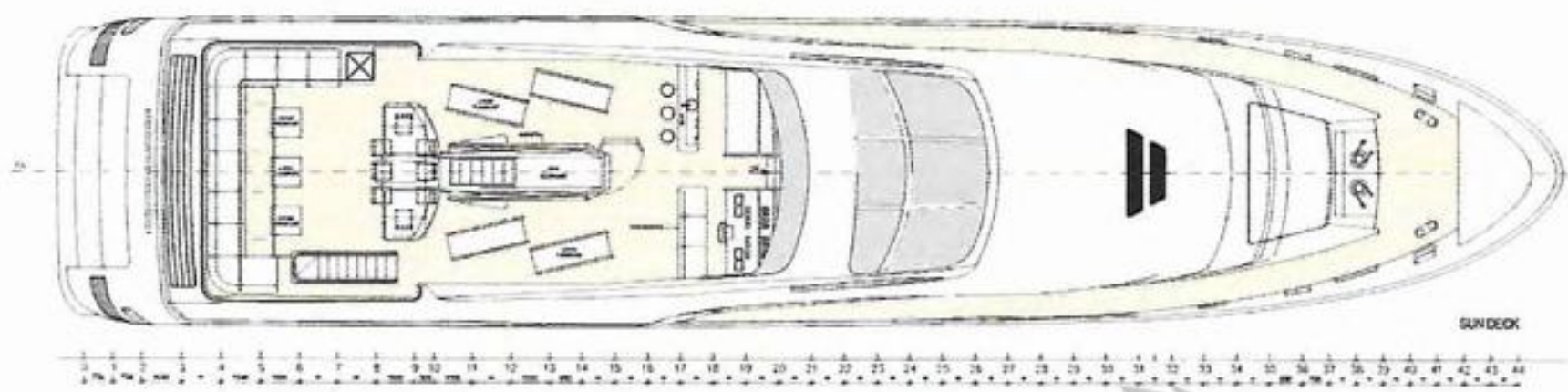
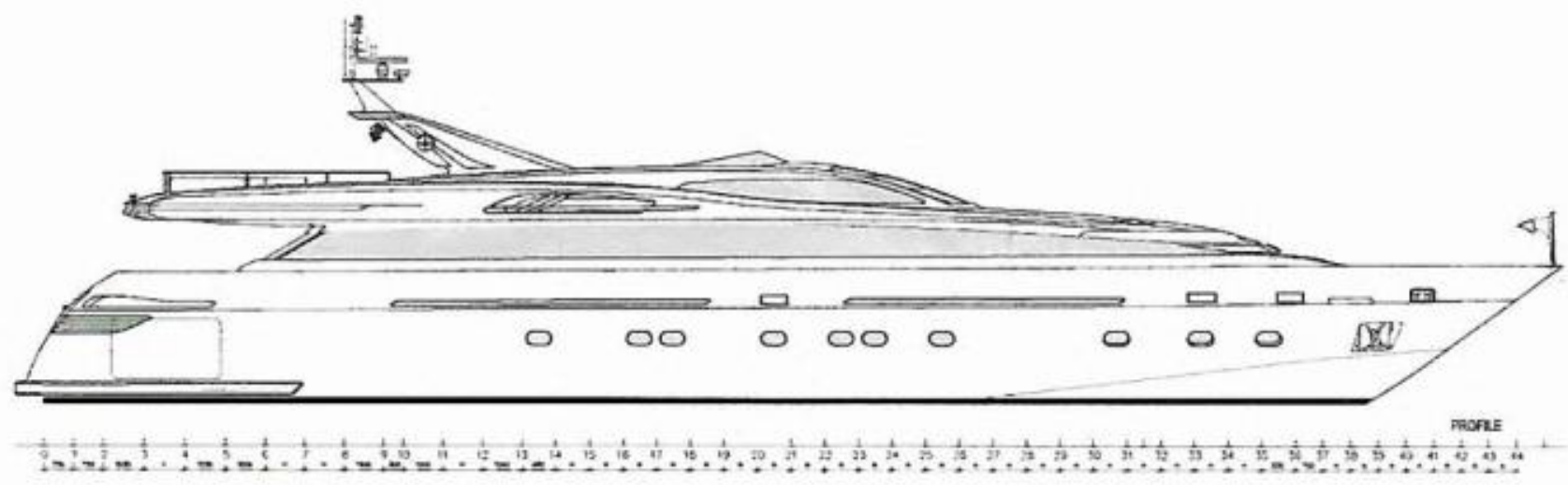


FLACKTON YACHTING
Superyacht solutions

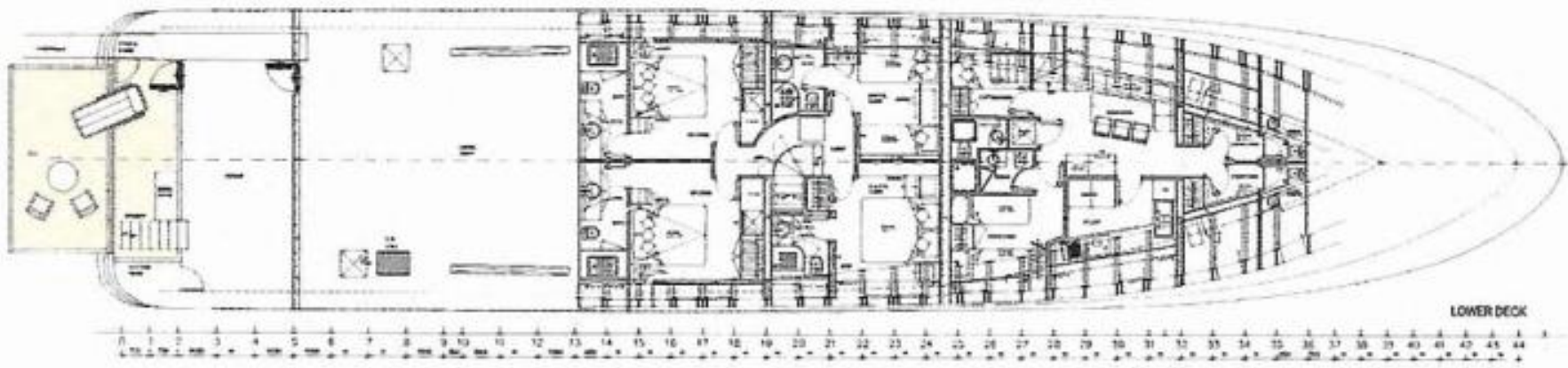
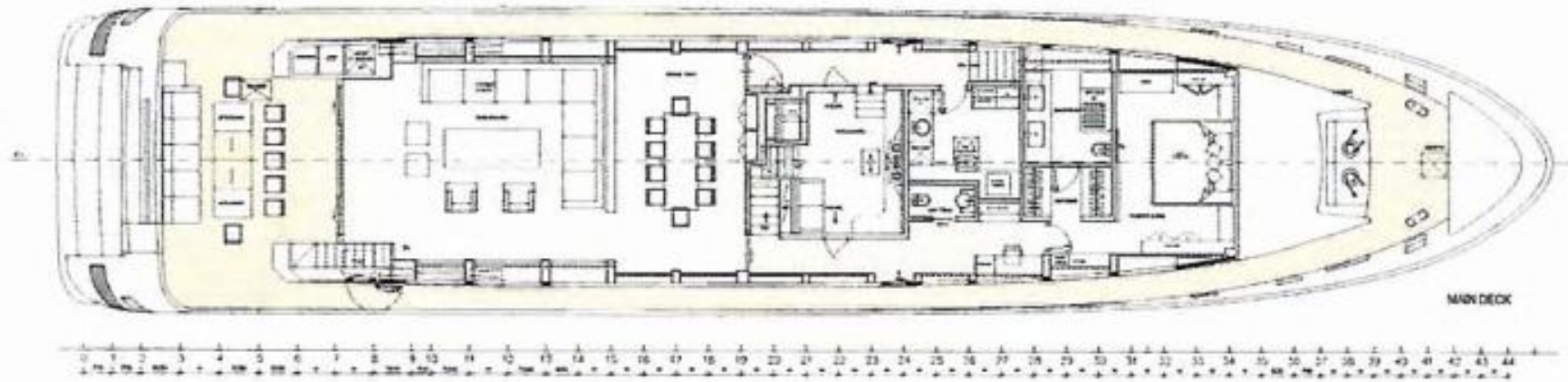


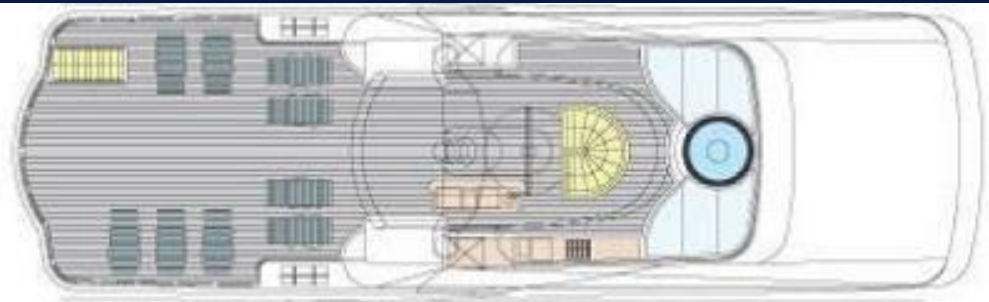




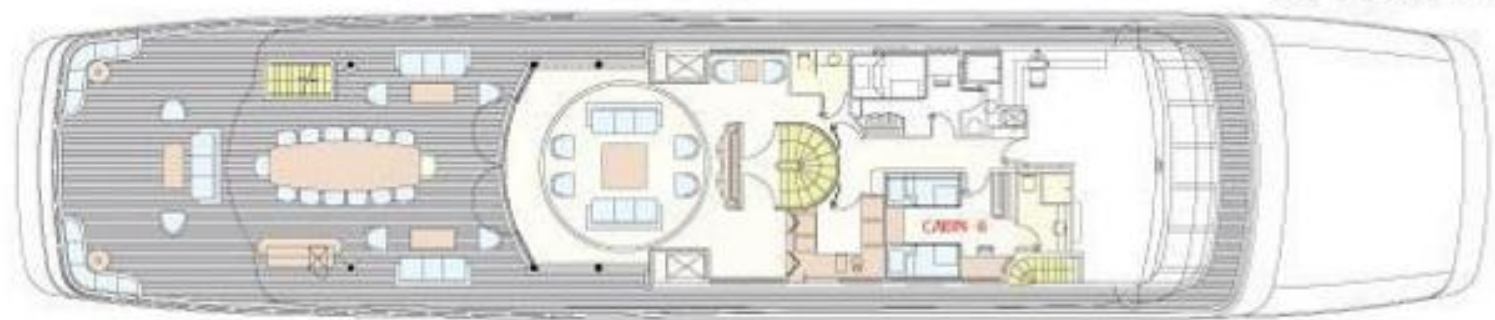


Yachts offered are subject to availability. The particulars are believed to be correct but are not guaranteed and may not be used for contractual purposes. Specification provided for information only.

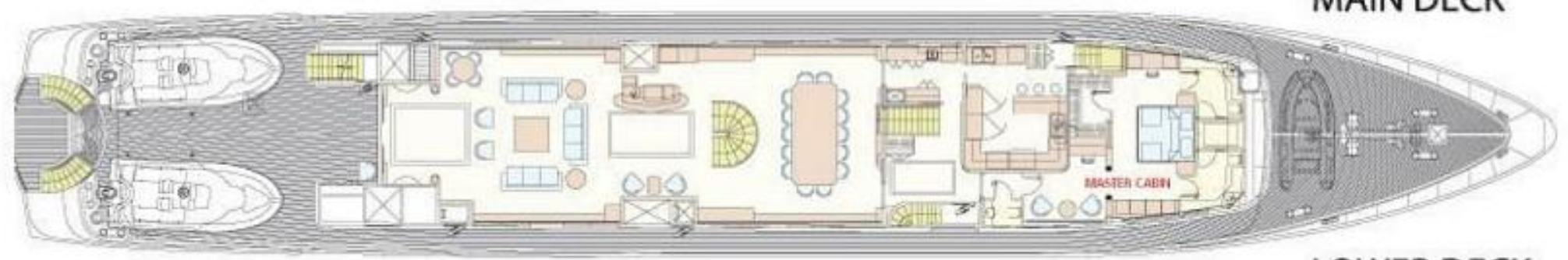




FLYBRIDGE



UPPER DECK



MAIN DECK



LOWER DECK

 **FLACKTON YACHTING**
Superyacht solutions

MADO



Table of Contents

1. FEATURES

2. SPECIFICATIONS

3. INFORMATION

Admiral | 39M

Disclaimer

Yachts offered are subject to availability. The information provided is believed to be correct but not guaranteed and may not be used for contractual purposes. Specifications provided for information only.

1. FEATURES

ABS 15-year special class survey completed 2024

- Full paint completed 2023
- Major refits in 2023 and 2017
- New KOHLER Generators in 2022
- Only her second Owners since delivery
- Large swim platform (circa 20 sqm) and sundeck (circa 60sqm)
- Exceptional interior style and ambiance
- Master cabin on main deck
- Fast Cruising speed of 28 knots

2. SPECIFICATIONS

LOCATION - ATHENS:

Construction:

Aluminum Alloy
Builder - ADMIRAL
Classification - ABS
G.R.T - 297
GRP

Capacity:

Black water tank - 450 Ltrs
Fuel Capacity - 34500 Ltrs
Grey water tank - 450 Ltrs
Water Capacity - 5300 Ltrs

Machinery:

Engine Hours - 3030 hrs
Engine Model - 2 X MTU 16V 4000 M90
Gearbox - 2 X ZF 7600V-RATIO 3.286:1A
Generator Hours - Port: 2800 Hrs(Oct.2024) Starboard: 2800 Hrs (Oct.2024)
Generators - 2 X KOHLER 55 EFOZDS, 1 X KOHLER 27 EFOZD (2600 Hrs)
Propulsion - DETRA CUSTOM PROPELLERS

Fuel - Capacity: 34700 Ltrs:

Diesel

Electricity:

Electricity Type - 380V, 3P A/C, 50HZ
Shore Power - 220V/380V TRHEE PHASES , 70 KVA

Auxiliary Machinery:

Air compressor
Stabilizer - NO--- HAMPHREE INTERCEPTORS UNDERWAY 2 STATIONS
Water maker - 320 Ltrs/hour

2. INFORMATION

CAPITAL IMPROVEMENTS

2024

- ABS CLASS SURVEY 15 YEARS
- REPAINT VARIOUS SPOTS ACCORDING WARRANTY AND SURVEYOR
- REPLACE ENGINE OF THE WILLIAMS JET TENDER
- UPDATE AMX SYSTEMS –REPLACE I PADS –NEW 5G INTERNET MODEMS
- VARIOUS INTERIOR REVANISH AREAS , AND EXTERIOR TABLES
- VARIOUS TECHNICAL UPGRADES AND MAINTENACE
- REPLACE TV IN THE MASTER CABIN WITH A NEW 55”

2023-REFIT

- 6 MONTHS REFIT IN THE DRY DOCK IN ATLAS SHIPYARD
- FULL REPAINT WITH AWLGRIP BLACK/GREY COLOR
- REPLACE ALL EXTERIOR TEAK INSULATION , RUBBER
- REPLACE TEAK IN VARIOUS AREAS FOR ALUMINIUM PROTECTION
- NEW CONSTRUCTIONS IN THE SUNDECK , CORNER SOFA, BAR, TABLES, SUNBEDS
- REVARNISH ALL WOODEN INTERIOR FLOORS
- MAINTAIN ALL INTERIOR MARBLES OF ALL CABINS
- REPLACE ALL INTERIOR CARPETS
- REPLACE TENDERS FENDER CONSTRUCTIONS WITH NEW ONE
- REPLACE EXTERIOR LIGHTS IN THE SUNDECK
- REPLACE BOILES
- UPGRADE AUDIO SYSTEMS
- VARIOUS TECHNICAL UPGRADES AND MAINTENANCE

2022

- REPLACE KOHLER GENERATORS WITH NEW TYPE 55KW DURING DRYDOCK
- VARIOUS PAINT MAINTENANCE WORKS
- VARIOUS INTERIOR REVARNISH
- VARIOUS TECHNICAL UPGRADES AND MAINTENANCE

2017-REFIT

- COMPLETE PAINT JOB. THE BOAT WAS PAINTED BLACK AND GRAY.
- INTERIOR CHANGES TO SOFAS & BATHROOMS
- CHANGES TO THE YACHT'S PIPING FOR A/C.
- NEW TENDERS.

